



**Candice Harding**  
Non-Principal Property  
Practitioner  
Registered with PPRA  
(FFC 202 332 968 1)  
082 075 2579

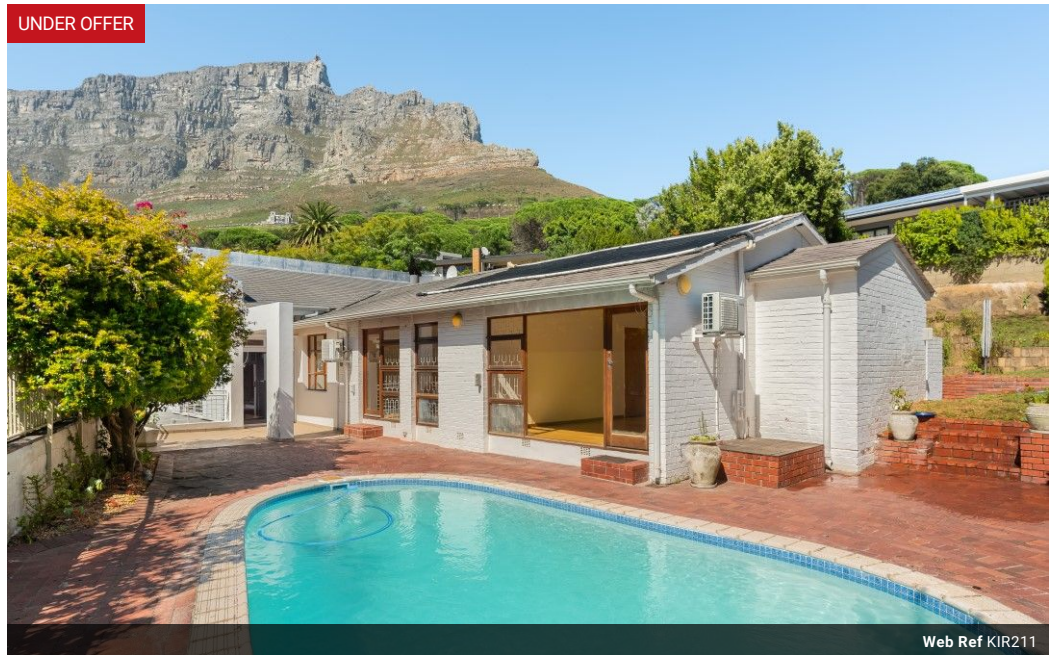
candice@kapstadtinternational.co.za

Contact Gardens

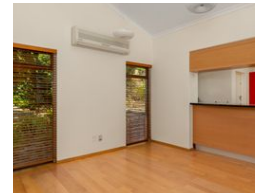
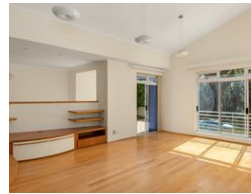
021 4242211

11a De Lorentz Street,  
Gardens,  
8001

UNDER OFFER



Web Ref KIR211



R58,000 pm

Lease Period 12 months  
Annual Escalation -

Availability 01 May 2025

Deposit R87,000

4 3 2

### MID CENTURY HOME IN DREAM POSITION

Ideally positioned in one of the most desirable areas of Higgovale in a forested setting, this north facing home is situated on a generously sized 1520 square metre plot.

The impressive double volume, open plan living area has slanted ceilings, a fireplace and looks out over the Stone Pines in the green belt across the road.

The kitchen has an induction stove, ample cupboards, granite tops and looks onto the dining area.

One side of the lounge opens onto a generously sized terrace with large, sparkling pool – an amazing space to entertain friends and family with both mountain and city views. Kids will enjoy hours in the pool as well as the garden, which wraps around the house and has majestic granite boulders to climb over and some lawn for ball games.

The other side of the lounge has two interleading rooms, one is ideal...

### Features

**Pets Allowed** Yes

#### Interior

|              |    |
|--------------|----|
| Bedrooms     | 4  |
| Bathrooms    | 3  |
| Kitchens     | 1  |
| Recep. Rooms | 2  |
| Studies      | 1  |
| Furnished    | No |

#### Exterior

|                     |      |
|---------------------|------|
| Garages             | 2    |
| Carports / Parkings | 3    |
| Security            | Yes  |
| Pool                | Yes  |
| Views               | True |

#### Sizes

|           |                     |
|-----------|---------------------|
| Land Size | 1,520m <sup>2</sup> |
|-----------|---------------------|