



Annalie Baesa
Non-Principal Property Practitioner
Registered with PPRA
(FFC 202 371 474 84)
0824297872

annalie@kapstadtdinternational.co.za

Contact Gardens

021 4242211

11a De Lorentz Street,
Gardens,
8001

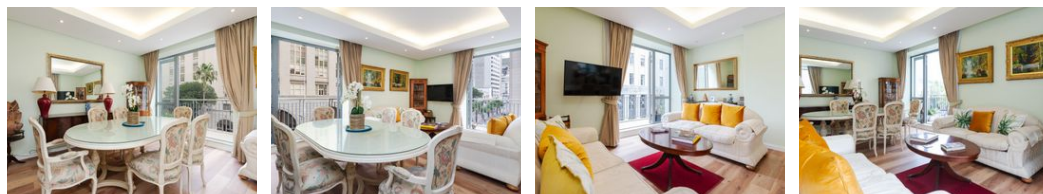
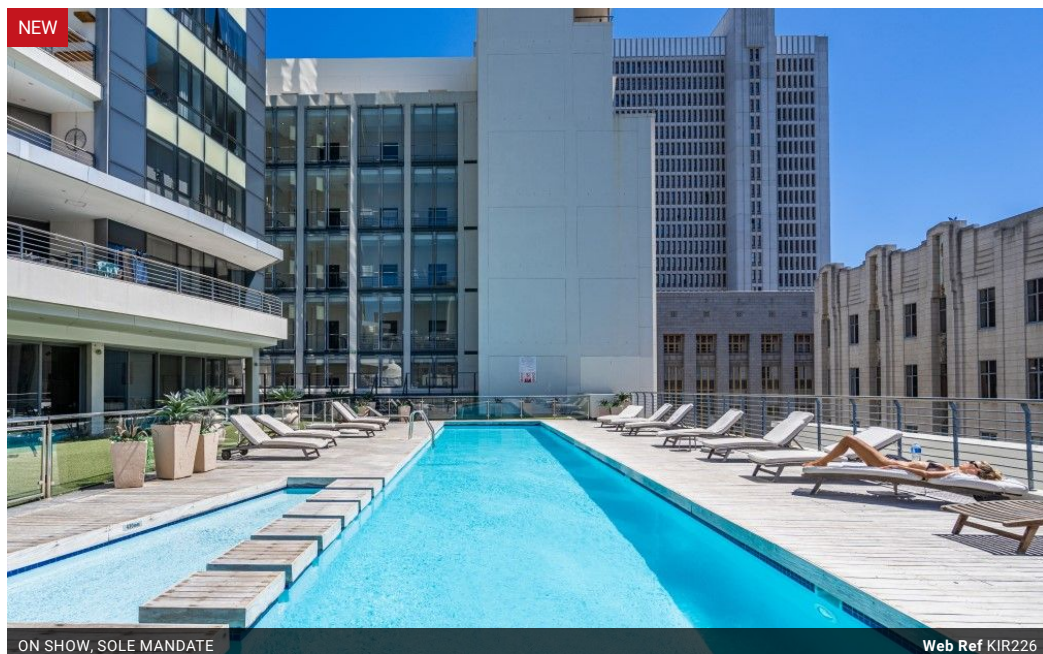
On Show

11:00 to 12:00

Saturday, 26 April 2025

Directions

Enter via Wale St or St George's Mall



R3,500,000

2 2

Monthly Bond Repayment R36,126.59
Calculated over 20 years at 11% with no deposit.

Transfer Costs R221,714.00 **Bond Costs** R47,840.00
These calculations are only a guide. Please ask your conveyancer for exact calculations.

Monthly Levy R4,000 **Monthly Rates** R1,100

City Perfection

Discover urban elegance in this spacious two-bedroom corner apartment located in the prestigious Court Chambers block of Mandela Rhodes Place, right in the heart of Cape Town's vibrant City Centre. One of the rare units to feature a wraparound balcony offering breathtaking views of Table Mountain, the historic St George's Cathedral, and the surrounding Art Deco skyline.

Flooded with natural light thanks to its corner positioning and floor-to-ceiling doors, the open-plan living, dining, and kitchen area flows seamlessly onto the balcony—perfect for entertaining or soaking up the sun. The modern kitchen boasts a central island,...

Features

Interior		Exterior		Sizes	
Bedrooms	2	Carports / Parkings	1	Floor Size	99m ²
Bathrooms	2	Security	Yes		
Kitchens	1	Pool	Yes		
Recep. Rooms	2	Views	False		
Furnished	No				

